

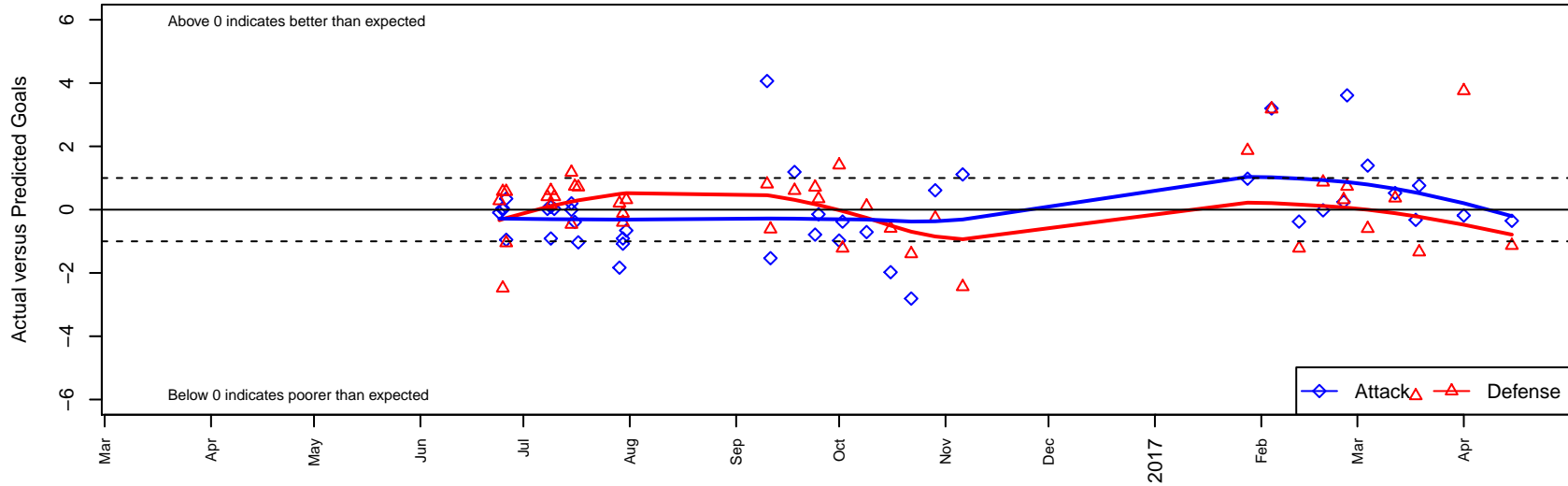
# Pacific FC United G02

Pacific FC  
 Battleground, WA  
 G02 total strength=1299  
 attack=7.7 defense=4.13  
 fall league = PTT G02 Div 2  
 spr league = Win OYS G02 Div 1 Red

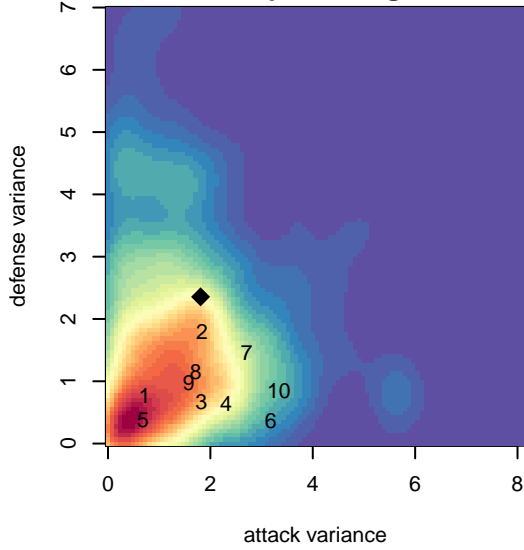
alt names used:  
 Pacific FC United  
 PACIFIC FCPACIFIC FC UNITED G02  
 Pacific FC G02 United  
 PFC United  
 Pacific FC G02 United  
 Pacific FC G02 United

Venues played:  
 2016 Clash At the Border Div 2 Gold/Silver U15  
 2016 PCU Summer Classic U15-U16 Silver Bl:  
 2016 Beaverton Cup GU15 Silver  
 2016 Mt Hood Challenge U15 Silver/Bronze  
 2016 PTT G02 Division 2  
 2016 Win OYS G02 Division 1 Red  
 2016 WYS Championship G02

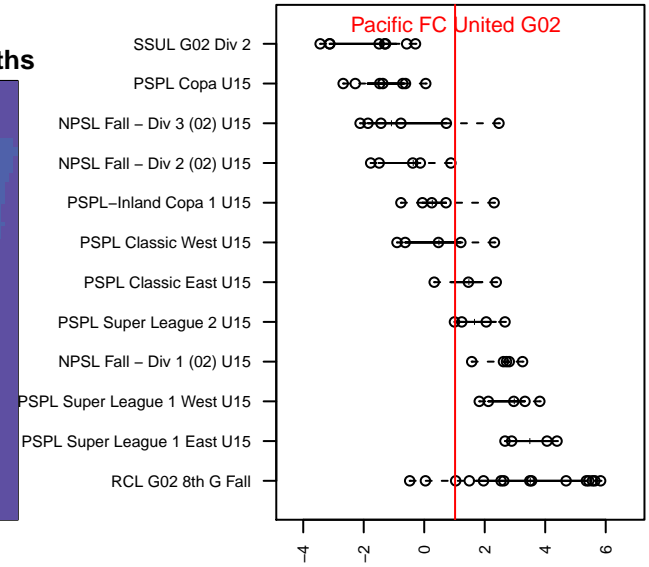
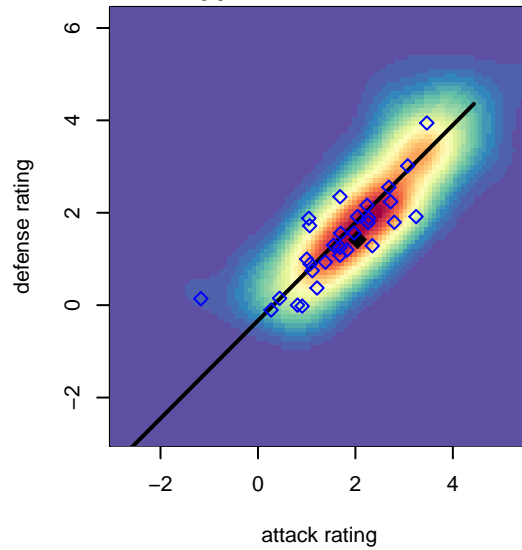
**Pacific FC United G02**  
 Dots are actual minus expected GF (blue circles) and GA (red triangles).  
 Blue line is smoothed change in attack strength. Red is smoothed change in defense strength.



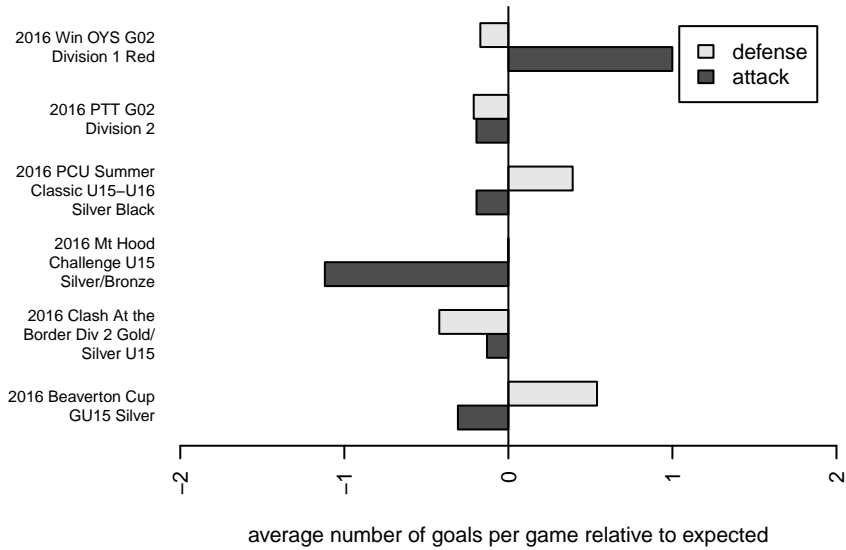
**attack and defense variance (black dot)  
relative to other teams  
and top 10 in region**



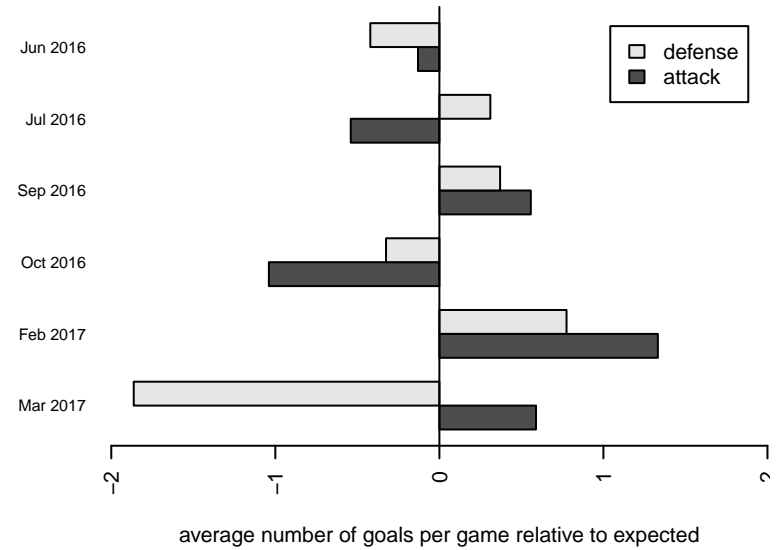
**attack and defense rating  
relative to others at age  
and all opponents in last 13 months**



**Performance relative to 13 month average**



**Performance relative to 13 month average**



| <b>date</b> | <b>home</b>                        |   | <b>away</b>                   |   | <b>venue</b>                             | <b>pred.home</b> | <b>pred.awa</b> |
|-------------|------------------------------------|---|-------------------------------|---|--|------------------|-----------------|
| 17-04-15    | GS Surf A G02                      | 6 | Pacific FC United G02         | 0 | 2016 WYS Championship G02                | 4.87             | 0.35            |
| 17-04-01    | Pacific FC United G02              | 0 | Spokane Sounders A G02        | 4 | 2016 WYS Championship G02                | 0.18             | 7.76            |
| 17-03-19    | Pacific FC United G02              | 2 | Pelada FA Deportiva G02       | 2 | 2016 Win OYS G02 Division 1 Red          | 1.24             | 0.66            |
| 17-03-18    | Pelada FA McKenzie Strykers FC G02 | 8 | Pacific FC United G02         | 1 | 2016 Win OYS G02 Division 1 Red          | 2.12             | 1.32            |
| 17-03-12    | Pacific FC United G02              | 2 | THUSC Rapids G02              | 1 | 2016 Win OYS G02 Division 1 Red          | 1.47             | 1.36            |
| 17-03-04    | ETFC Force Red G02                 | 4 | Pacific FC United G02         | 2 | 2016 Win OYS G02 Division 1 Red          | 3.40             | 0.61            |
| 17-02-26    | Pacific FC United G02              | 6 | Westside Timbers Samba TS G02 | 0 | 2016 Win OYS G02 Division 1 Red          | 2.39             | 0.74            |
| 17-02-25    | Bend FC Timbers Red G02            | 2 | Pacific FC United G02         | 1 | 2016 Win OYS G02 Division 1 Red          | 2.31             | 0.75            |
| 17-02-19    | Pacific FC United G02              | 1 | NWSC Impact G02               | 1 | 2016 Win OYS G02 Division 1 Red          | 1.02             | 1.87            |
| 17-02-12    | Pacific FC United G02              | 1 | FC Portland White G02         | 3 | 2016 Win OYS G02 Division 1 Red          | 1.38             | 1.78            |
| 17-02-04    | Washington Timbers Red 2 G02       | 0 | Pacific FC United G02         | 4 | 2016 Win OYS G02 Division 1 Red          | 3.18             | 0.80            |
| 17-01-28    | Pacific FC United G02              | 2 | NWSC Impact G02               | 0 | 2016 Win OYS G02 Division 1 Red          | 1.02             | 1.87            |
| 16-11-06    | CYSA Timber Barons Green G02       | 4 | Pacific FC United G02         | 3 | 2016 PTT G02 Division 2                  | 1.56             | 1.89            |
| 16-10-29    | Pacific FC United G02              | 3 | Westside Timbers Samba TS G02 | 1 | 2016 PTT G02 Division 2                  | 2.39             | 0.74            |
| 16-10-22    | Pelada FA Willamette G02           | 2 | Pacific FC United G02         | 4 | 2016 PTT G02 Division 2                  | 0.60             | 6.81            |
| 16-10-16    | Oregon Trails FC Fusion G02        | 2 | Pacific FC United G02         | 0 | 2016 PTT G02 Division 2                  | 1.41             | 1.98            |
| 16-10-09    | Pacific FC United G02              | 5 | THUSC Rapidium G02            | 0 | 2016 PTT G02 Division 2                  | 5.71             | 0.11            |
| 16-10-02    | FC Portland White G02              | 3 | Pacific FC United G02         | 1 | 2016 PTT G02 Division 2                  | 1.78             | 1.38            |
| 16-10-01    | Pacific FC United G02              | 1 | Oregon Trails FC Fusion G02   | 0 | 2016 PTT G02 Division 2                  | 1.98             | 1.41            |
| 16-09-25    | BSC Hood River Black G02           | 0 | Pacific FC United G02         | 7 | 2016 PTT G02 Division 2                  | 0.34             | 7.15            |
| 16-09-24    | Pacific FC United G02              | 2 | PCU Red G02                   | 0 | 2016 PTT G02 Division 2                  | 2.79             | 0.71            |
| 16-09-18    | Pacific FC United G02              | 8 | Pelada FA Willamette G02      | 0 | 2016 PTT G02 Division 2                  | 6.81             | 0.60            |
| 16-09-11    | Pacific FC United G02              | 4 | LASC IFC Coras G02            | 1 | 2016 PTT G02 Division 2                  | 5.53             | 0.39            |
| 16-09-10    | BSC Portland Gold G02              | 0 | Pacific FC United G02         | 9 | 2016 PTT G02 Division 2                  | 0.81             | 4.94            |
| 16-07-31    | Pacific FC United G02              | 0 | Mustang SC Red G02            | 1 | 2016 Mt Hood Challenge U15 Silver/Bronze | 0.66             | 1.31            |
| 16-07-30    | Pacific FC United G02              | 2 | Whatcom FC Rangers White G02  | 1 | 2016 Mt Hood Challenge U15 Silver/Bronze | 2.91             | 0.88            |
| 16-07-30    | PSU Wildcats G02                   | 1 | Pacific FC United G02         | 5 | 2016 Mt Hood Challenge U15 Silver/Bronze | 0.60             | 6.07            |
| 16-07-29    | Crossfire OR Blue II G02           | 1 | Pacific FC United G02         | 0 | 2016 Mt Hood Challenge U15 Silver/Bronze | 1.20             | 1.83            |

| <b>date</b> | <b>home</b>                  |   | <b>away</b>                   |   | <b>venue</b>                             | <b>pred.home</b> | <b>pred.away</b> |
|-------------|------------------------------|---|-------------------------------|---|--|------------------|------------------|
| 2016-07-17  | Pacific FC United G02        | 0 | Eastside Timbers Red G02      | 5 | 2016 Beaverton Cup GU15 Silver           | 1.03             | 5.71             |
| 2016-07-16  | Pacific FC United G02        | 2 | Westside Timbers Samba TS G02 | 0 | 2016 Beaverton Cup GU15 Silver           | 2.39             | 0.74             |
| 2016-07-15  | Washington Timbers Red 2 G02 | 2 | Pacific FC United G02         | 1 | 2016 Beaverton Cup GU15 Silver           | 3.18             | 0.80             |
| 2016-07-15  | CSC Storm G02                | 3 | Pacific FC United G02         | 1 | 2016 Beaverton Cup GU15 Silver           | 2.53             | 1.01             |
| 2016-07-10  | Pacific FC United G02        | 2 | Oregon Trails FC Fusion G02   | 1 | 2016 PCU Summer Classic U15-U16 Silver B | 1.98             | 1.41             |
| 2016-07-09  | Hermiston United G02         | 1 | Pacific FC United G02         | 2 | 2016 PCU Summer Classic U15-U16 Silver B | 1.15             | 1.91             |
| 2016-07-09  | Crossfire OR Blue III G01    | 0 | Pacific FC United G02         | 0 | 2016 PCU Summer Classic U15-U16 Silver B | 0.60             | 0.91             |
| 2016-07-08  | Oregon Trails FC Fusion G02  | 1 | Pacific FC United G02         | 2 | 2016 PCU Summer Classic U15-U16 Silver B | 1.41             | 1.98             |
| 2016-06-26  | Pacific FC United G02        | 3 | MRFC White G02                | 2 | 2016 Clash At the Border Div 2 Gold/Silv | 2.65             | 0.95             |
| 2016-06-26  | W AFC Cobras G02             | 2 | Pacific FC United G02         | 1 | 2016 Clash At the Border Div 2 Gold/Silv | 2.57             | 1.95             |
| 2016-06-25  | Pacific FC United G02        | 2 | W AFC Cobras G02              | 2 | 2016 Clash At the Border Div 2 Gold/Silv | 1.95             | 2.57             |
| 2016-06-25  | NSC Montana G02              | 4 | Pacific FC United G02         | 0 | 2016 Clash At the Border Div 2 Gold/Silv | 1.52             | 0.00             |
| 2016-06-24  | Crossfire OR Blue I G02      | 3 | Pacific FC United G02         | 1 | 2016 Clash At the Border Div 2 Gold/Silv | 3.28             | 1.09             |